



## Sherman Plaza

**Suite 490**  
1,891 rsf

**David Solomon**

Lic. 01209699

CB Richard Ellis

david.solomon@cbre.com

818.907.4628

**Matthew Heyn**

Lic. 01306148

CB Richard Ellis

matthew.heyn@cbre.com

818.907.4619

**Troy Pollet**

Lic. 01830817

CB Richard Ellis

troy.pollet@ecp-llc.com

818.907.4620

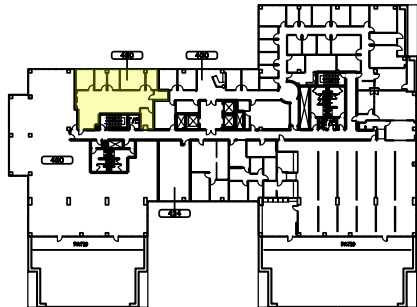
**Marc Riches**

Lic. 01256515

Embarcadero Capital Partners

mriches@ecp-llc.com

818-901-8436



490

