



Results Way Corporate Park - Cupertino Office / R&D Corporate Campus

Available for Lease: 38,011 square feet



Listing Agents

John McMahon
408.282.3944
jmcmahon@colliersparrish.com
CA License No. 00877855

Gregg vonThaden
408.282.3915
gvonthaden@colliersparrish.com
CA License No. 01007475

Paul McManus
408.282.3963
pmcmanus@colliersparrish.com
CA License #: 01834432

Colliers International
450 W. Santa Clara St.
San Jose, CA 95113
408.282.3900

Owners' Representative

Andrew Brown
Director of Leasing
abrown@ecp-llc.com
650.292.4100

**Embarcadero Capital
Partners, LLC**
1301 Shoreway Road
Suite 250
Belmont, CA 94002



6 Results Way consists of a two-story office/R&D building with approximately 38,011 square feet available situated on beautiful landscaped grounds with mature trees providing an exceptional campus setting.

Results Way Corporate Park tenants are afforded excellent expansion opportunities within the six existing buildings in Phase I and 154,320 square feet planned in Phase II.

Located in highly desirable Cupertino, the park boasts superior access to Interstate 280 and Highway 85 and is in close proximity to hotels, restaurants and retail amenities on Stevens Creek Boulevard.



Listing Agents

John McMahon
408.282.3944
jcmahon@colliersparrish.com
CA License No. 00877855

Gregg vonThaden
408.282.3915
gvonthaden@colliersparrish.com
CA License No. 01007475

Paul McManus
408.282.3963
pmcmanus@colliersparrish.com
CA License #: 01834432

Colliers International
450 W. Santa Clara St.
San Jose, CA 95113
408.282.3900

Owners' Representative

Andrew Brown
Director of Leasing
abrown@ecp-llc.com
650.292.4100

Embarcadero Capital Partners, LLC
1301 Shoreway Road
Suite 250
Belmont, CA 94002

1st Floor - 18,318 rsf



Listing Agents

John McMahon
408.282.3944
jcmahon@colliersparrish.com
CA License No. 00877855

Gregg vonThaden
408.282.3915
gvonthaden@colliersparrish.com
CA License No. 01007475

Paul McManus
408.282.3963
pmcmanus@colliersparrish.com
CA License #: 01834432

Colliers International
450 W. Santa Clara St.
San Jose, CA 95113
408.282.3900

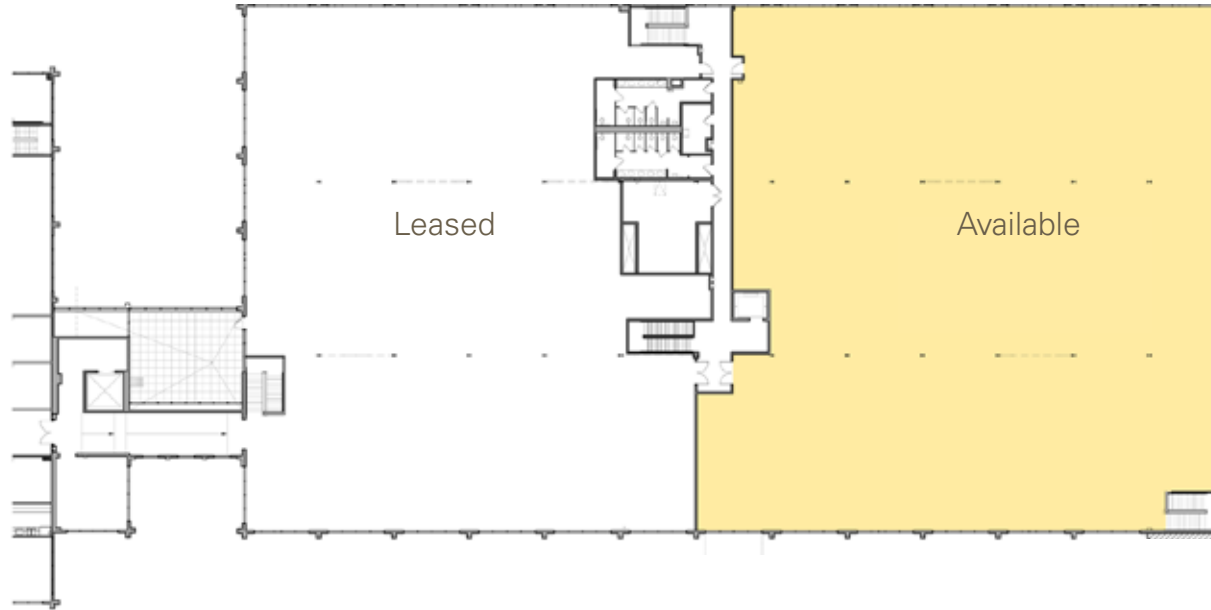
Owners' Representative

Andrew Brown
Director of Leasing
abrown@ecp-llc.com
650.292.4100

Embarcadero Capital Partners, LLC
1301 Shoreway Road
Suite 250
Belmont, CA 94002

2nd Floor - 19,693 rsf

www.ecp-llc.com



Listing Agents

John McMahon
408.282.3944
jcmahon@colliersparrish.com
CA License No. 00877855

Gregg vonThaden
408.282.3915
gvonthaden@colliersparrish.com
CA License No. 01007475

Paul McManus
408.282.3963
pmcmanus@colliersparrish.com
CA License #: 01834432

Colliers International
450 W. Santa Clara St.
San Jose, CA 95113
408.282.3900

Owners' Representative

Andrew Brown
Director of Leasing
abrown@ecp-llc.com
650.292.4100

Embarcadero Capital Partners, LLC
1301 Shoreway Road
Suite 250
Belmont, CA 94002

6 Results Way, Cupertino, California



PROPERTY HIGHLIGHTS:

- Two-story office /R&D building: 38,011 square feet available
- Part of a six building corporate campus with expansion opportunities in planned Phase II
- Approximately 4/1000 parking ratio with an underground parking garage
- Beautifully landscaped grounds with mature trees provide an exceptional campus setting
- Close proximity to restaurants, hotels and retail along Stevens Creek Boulevard
- Excellent access to Highways 85 and 280



Listing Agents

John McMahon
408.282.3944
jcmahon@colliersparrish.com
CA License No. 00877855

Gregg von Thaden
408.282.3915
gvonthaden@colliersparrish.com
CA License No. 01007475

Paul McManus
408.282.3963
pmmcmanus@colliersparrish.com
CA License #: 01834432

Colliers International
450 W. Santa Clara St.
San Jose, CA 95113
408.282.3900

Owners' Representative

Andrew Brown
Director of Leasing
abrown@ecp-llc.com
650.292.4100

Embarcadero Capital Partners, LLC
1301 Shoreway Road
Suite 250
Belmont, CA 94002



Listing Agents

John McMahon
408.282.3944
jmcmahon@colliersparrish.com
CA License No. 00877855

Gregg vonThaden
408.282.3915
gvonthaden@colliersparrish.com
CA License No. 01007475

Paul McManus
408.282.3963
pmmcmanus@colliersparrish.com
CA License #: 01834432

Colliers International
450 W. Santa Clara St.
San Jose, CA 95113
408.282.3900

Owners' Representative

Andrew Brown
Director of Leasing
abrown@ecp-llc.com
650.292.4100

Embarcadero Capital Partners, LLC
1301 Shoreway Road
Suite 250
Belmont, CA 94002