
To: Nick Thomson
From: Mark Lopez
Date: June 22, 2007
Subject: 100 Hamilton, Palo Alto – Site Assessment

This purpose of this document is to provide the Technology findings observed during a recent visit to the building mentioned below. The areas observed were the MPOE, IDFs and various suites.

Date of site visit: May 14, 2007

Office Information

Office	Palo Alto
Address	100 Hamilton
City	Palo Alto
State	CA
Zip	94301
Main Phone number	650.373.1230
Fax	650.373.1617
Contact	Nick Thomson
Phone	650.373.1313
Cell	650.678.4000
Fax	
Email	nthomson@ecp-llc.com

Overall Condition:

The four-story building is located on the corner of Hamilton Avenue and Alma Street in downtown Palo Alto. The building is well maintained and features two atriums located near the center of the building that are open to the glass ceiling at the top of the building. There are two elevators located near the center of the building space with each floor's landing served by open walkways to the office areas.

Summary

Telco Services Minimum Point Of Entry	Yes
Telco Services Minimum Point Of Entry location	Level A parking garage
Copper Facilities	Yes
Copper Facilities Capacity	900 pair
Fiber Facilities	Yes – Fiber cable from the street
Fiber Facilities Equipment	No – Fiber cable not terminated
Wireless Service	None observed – would be at tenant level
Cable TV	Two dishes on the roof with coax cable

Site Assessment

Term Index

MPOE	Minimum Point Of Entry – A room where the local exchange company terminates the cable used to deliver Telco Services for communication to outside the building. In addition, it provides the connection point for these services and the office areas, via tie cables.
IDF	Intermediate Distribution Frame - A room or series of rooms that are strategically located throughout a building to provide the connection point between the MPOE and individual office areas.
LEC	Local Exchange Company – The company that installs and maintains the cable between the building MPOE and the LEC’s Central Office where local circuits originate, which they also provide.
Telco Facilities	The physical layer consisting of copper and fiber cable and termination be it active or passive.
Telco Services	The circuits that are used to provide voice and/or data connection between active equipment and the public network.

MPOE

The MPOE is located in the Level A parking garage behind the elevators in a room labeled Utility Room. A copper feeder from the street (LEC) serves the MPOE. Two innerducts with fiber from the street run through the MPOE but do not terminate there. The MPOE is fairly clean though some basic neatening would be recommended. In addition, there is some unused cabled located within the MPOE that should be eliminated.

The copper Telco Facilities is a 900-pair cable, which terminates on 66-style termination blocks attached to the plywood backboard. This termination point does not have a protection fuse field. There are basic phone lines and DS1/T1s delivered on this cable.

The fiber Telco Facilities consist of two cables from the street, both of which pass through and exit the MPOE directly into a conduit that feeds the IDFs in the office area. One of the fiber cables can be traced to the fourth floor IDF where it is cut off at the backboard. The other fiber cable exits the second floor IDF into the ceiling space, where it has been cut off. Neither fiber is terminated on equipment, which would be required prior to being used for Telco Services.

In addition, the MPOE is used to distribute Telco Services into the office areas via tie cables to the building IDFs.

IDF

This building has one IDF per floor. Each IDF has a 150-pair tie cable that feeds back to the MPOE, which are terminated on 66-style termination blocks. The tie cables pair counts are identified fairly well on the 66-style termination blocks in the MPOE. The IDFs include both station cable termination directly from suites and tie cables into other suite areas where other communication closets or Server Rooms are expected to reside.

Specific IDF information is as follows:

Floor	Identified	Pair count from MPOE
First	1.1	1 – 150
Second	2.1	151 – 300
Third	3.1	301 – 450
Fourth	4.1	451 - 600

Wireless Service

There was no building wireless service devices observed. The building tenants may have their own wireless services installed for their own use.

Cable/Satellite

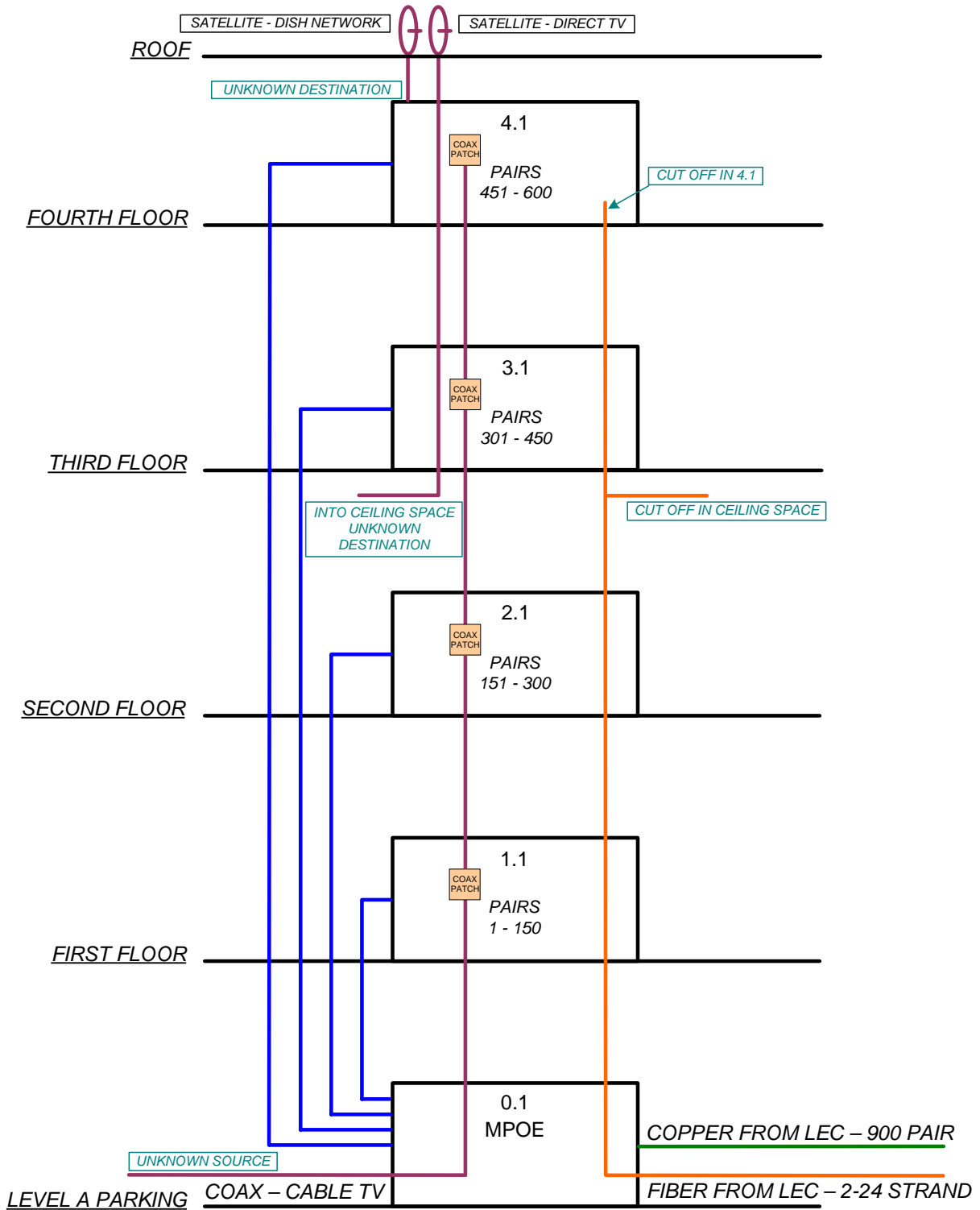
There are two satellite dishes located on the roof of the Hamilton building.

A Direct TV dish is connected to a coax cable, which runs down through the stacked fourth and third floor IDFs and then out into ceiling space of the second floor. The final destination of the coax cable is unknown.

A Dish Network dish is connected to a coax cable, which runs into the ceiling space of the fourth floor. The final destination of the coax cable is unknown.

A coax cable is run into the MPOE up through all of the IDFs with a patch box for connectivity in each. The boxes are locked so a key would be required for access. The source for the coax cable is unknown.

Riser Diagram



Photos of the site



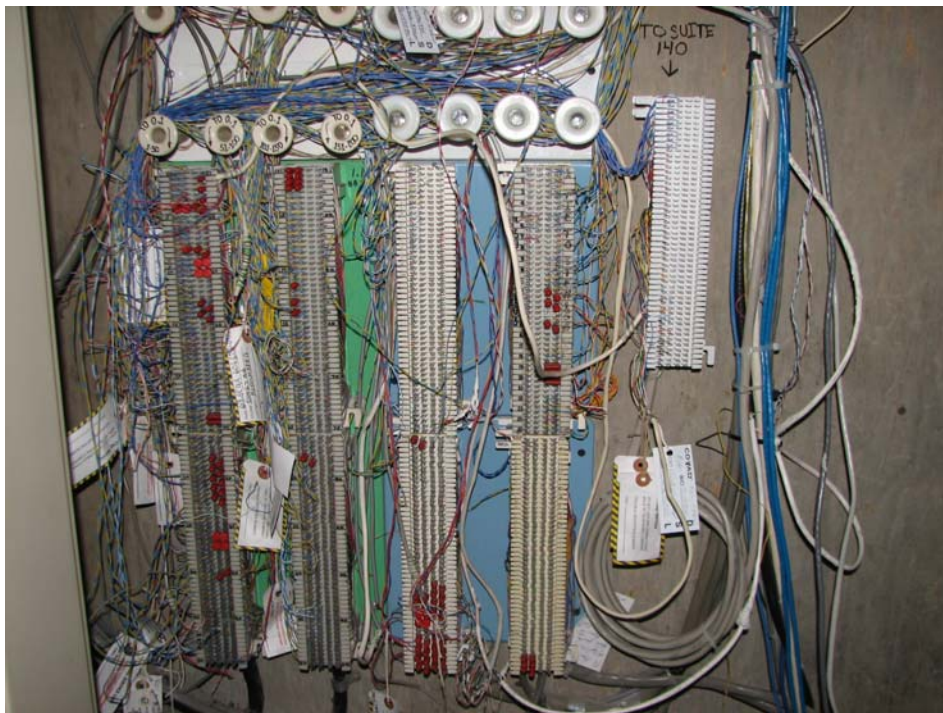
The MPOE location behind the elevators on parking level A.



The entry point from the “street” (LEC) for the copper and fiber Telco Facilities cable.



The copper termination from the “street” (LEC). Notice orange fiber innerduct which enters the MPOE from the street, passes through the MPOE and into the conduit to the building IDF.



The first floor IDF – typical.



The second floor IDF. Note ivory box, which is the coax cable patch point – one per IDF. Note orange fiber innerduct.



The fourth floor IDF. Note black fiber cable, which has been cut.



The Direct TV dish, which is located on the roof. The coax cable runs through the stacked IDFs and enters the second floor ceiling space. The final destination of the coax is unknown.



The Dish Network dish, which is located on the roof. The coax cable runs into the ceiling space above the fourth floor. The final destination of the coax is unknown.



This is a pullbox in the MPOE used to provide the coax cable that is ran through each IDF patch box. The source of the coax cable is unknown.