

---

To: Nick Thomson  
From: Mark Lopez  
Date: July 12, 2007  
Subject: 152 North Third, San Jose – Site Assessment

---

This purpose of this document is to provide the Technology findings observed during a recent visit to the building mentioned below. The areas observed were the MPOE, IDFs and various suites.

Date of site visit: June 26, 2007

### **Office Information**

Office	San Jose
Address	152 North Third
City	San Jose
State	CA
Zip	95112
Main Phone number	650.373.1230
Fax	650.373.1617
Contact	Nick Thomson
Phone	650.373.1313
Cell	650.678.4000
Fax	650.373.1617
Email	nthomson@ecp-llc.com

### **Overall Condition:**

The nine-story building is located across from St. James Park in downtown San Jose. The building is well maintained and features a nice lobby with three elevators.

### **Summary**

Telco Services Minimum Point Of Entry	Yes
Telco Services Minimum Point Of Entry location	Basement level parking garage
Copper Facilities	Yes
Copper Facilities Capacity	1200 pair
Fiber Facilities	Yes – Fiber cable from the street
Fiber Facilities Equipment	No – MPOE Yes – Suite 100 on Optera 3400
Core Wireless Service	None observed – would be at tenant level
Cable TV	Multi-service antennae on the roof

## Site Assessment

### Term Index

MPOE	<b>Minimum Point Of Entry</b> – A room where the local exchange company terminates the cable used to deliver Telco Services for communication to outside the building. In addition, it provides the connection point for these services and the office areas, via tie cables.
IDF	<b>Intermediate Distribution Frame</b> - A room or series of rooms that are strategically located throughout a building to provide the connection point between the MPOE and individual office areas.
LEC	<b>Local Exchange Company</b> – The company that installs and maintains the cable between the building MPOE and the LEC’s Central Office where local circuits originate, which they also provide.
Telco Facilities	The physical layer consisting of copper and fiber cable and termination be it active or passive.
Telco Services	The circuits that are used to provide voice and/or data connection between active equipment and the public network.

### MPOE

The MPOE is located in the basement level-parking garage behind the elevators in a room labeled Main Electrical Shut-Off. A copper feeder as well as two inner ducts with fiber from the street (LEC) is run into the MPOE. The MPOE is clean though some minor cross-connect neatening would be recommended.

The copper Telco Facilities is a 1200-pair cable, which terminates on 66-style termination blocks attached to the plywood backboard. This termination point includes a protection fuse field. There are basic phone lines and DS1/T1s delivered on this cable.

The fiber Telco Facilities consist of two 24-strand cables from the street. One of the fiber cables is coiled in the MPOE with no equipment terminated. It is recommended to have this cable terminated on equipment that would allow for delivery of high bandwidth Telco Services to the building. The second fiber cable passes through the MPOE and into the first floor IDF. From there the cable runs into Suite 100 where it terminates onto a LEC-owned Optera3400. This equipment provides high bandwidth Telco Services for Suite 100.

In addition, the MPOE is used to distribute Telco Services into the office areas via tie cables to the building IDFs.

### IDF

This building has one IDF per floor. Each IDF has a 200-pair tie cable that feeds back to the MPOE, which are terminated on 66-style termination blocks. The tie cables pair counts are identified fairly well on the 66-style termination blocks in the MPOE, but not in the IDFs. The IDFs include both station cable termination directly from suites and tie cables into other suite areas where other communication closets or Server Rooms are expected to reside.

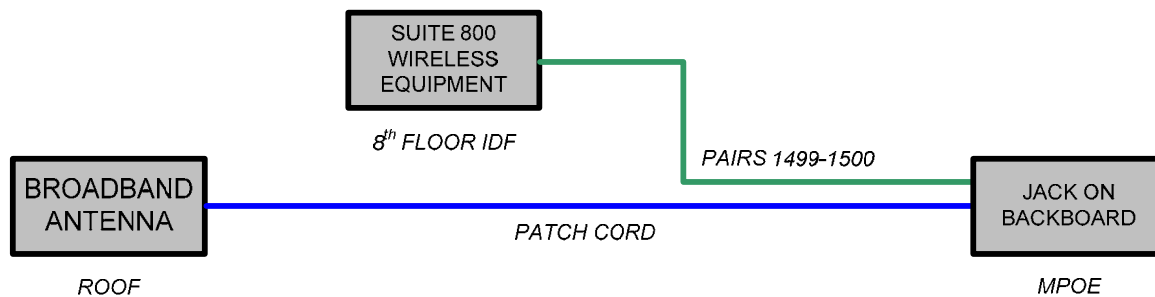
Specific IDF information is as follows:

Floor	Identified	Pair count from MPOE
First	1.1	1 – 200
Second	2.1	201 – 400
Third	3.1	401 – 600
Fourth	4.1	601 – 800
Fifth	5.1	801 – 1000
Sixth	6.1	1001 – 1200
Seventh	7.1	1201 – 1400
Eighth	8.1	1401 – 1600
Nine	9.1	1601 – 1800

### Wireless Service

There was no building wireless service devices observed. Some building tenants may have their own wireless services installed for their own use.

Suite 800 has a wireless network configured for their use, which is fed from an antenna on the roof. The connection for this service is connected through the MPOE and terminates in the 8<sup>th</sup> floor IDF.



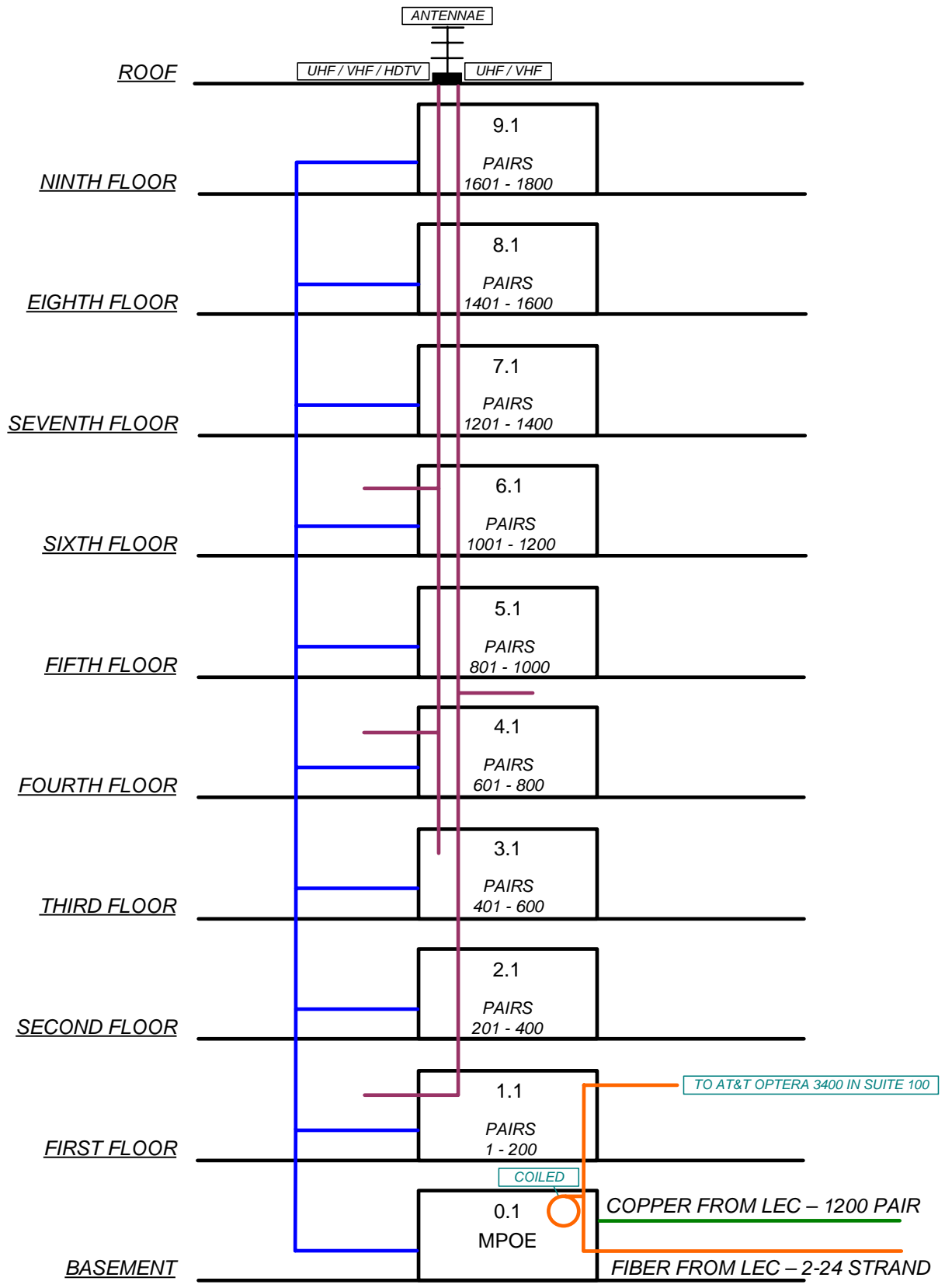
### Cable/Satellite

There is an antenna upright with multi-service antennae attached to it on the roof. It is expected that the services include UHF, VHF and possibly HDTV.

A single coax cable attaches to a UHF/VHF antennae that is run to the first floor IDF and into the ceiling space. There is a splitter for this coax cable in the fourth floor IDF. The final destination of both of these coax cables is unknown.

A group of coax cables (approximately five) attach to multiple antennae and are run to the third floor IDF where active equipment (amplifier) and multiple connections are located. Some of these distribute to the fourth and sixth floor. The final destination of the coax cable is unknown.

Riser Diagram



**Photos of the site**



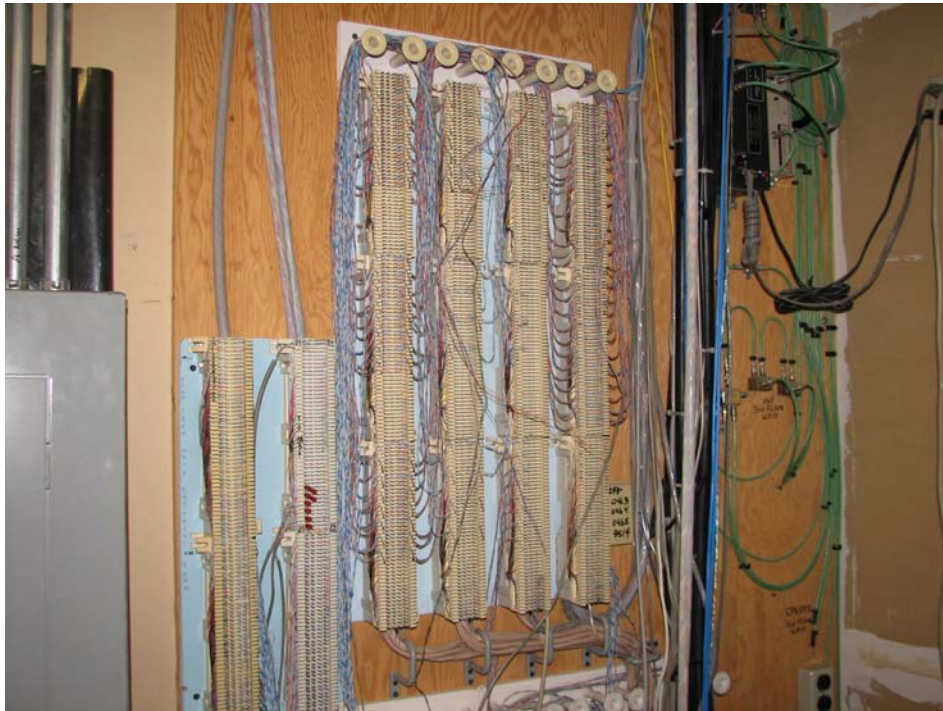
The MPOE location behind the elevators on the basement level.



The entry point from the “street” (LEC) for the copper and fiber Telco Facilities cables. Notice fiber coil on left continues the run to first floor – Suite 100. Coil on right ends there and is not terminated.



The copper termination from the “street” (LEC). Notice green protection field. Blue field above is for the IDF feeders.



The third floor IDF – typical. Notice coax cables on right.



The Optera3400 fiber termination in Suite 100. This feeds through the MPOE and is the only fiber termination for the building, though there is a coil of fiber, without termination, in the MPOE.



The antennae upright on the roof with multi-service antennae attached.  
Alfa Tech Cambridge Group



Active equipment (amplifiers) for the coax cables located in the third floor IDF.



Some end-user equipment located in the third floor IDF. This is located on the opposite wall from the IDF feeder and station cable terminations.