

---

To: Nick Thomson  
From: Mark Lopez  
Date: October 30, 2007  
Subject: Results Way, Cupertino – Site Assessment

---

This purpose of this document is to provide the Technology findings observed during a recent visit to the building mentioned below. The areas observed were the MPOE and IDFs.

Date of site visit: October 15, 2007

### **Office Information**

Office	Results Way Corporate Center
Address	1 Results Way. Identified as Building 5
City	Cupertino
State	CA
Zip	95112
Main Phone number	650.373.1230
Fax	650.373.1617
Contact	Nick Thomson
Phone	650.373.1313
Cell	650.678.4000
Fax	650.373.1617
Email	nthomson@ecp-llc.com

### **Overall Condition:**

This two-story building is located in the Results Way Corporate Center campus. It is identified as Building 5 but is also known as 1 Results Way. The inside of the building has had major demo work performed, with just the building core areas in place.

### **Summary**

Telco Services Minimum Point Of Entry	Yes (secondary MPOE for the campus)
Telco Services Minimum Point Of Entry location	Inside entry
Copper Facilities	Yes
Copper Facilities Capacity	300-pair
Fiber Facilities	No
Fiber Facilities Equipment	No
Core Wireless Service	No
Cable TV	Coax from street. No satellite dish on roof.

## Site Assessment

### Term Index

MPOE	<b>Minimum Point Of Entry</b> – A room where the local exchange company terminates the cable used to deliver Telco Services for communication to outside the building. In addition, it provides the connection point for these services and the office areas, via tie cables.
IDF	<b>Intermediate Distribution Frame</b> - A room or series of rooms that are strategically located throughout a building to provide the connection point between the MPOE and individual office areas.
LEC	<b>Local Exchange Company</b> – The company that installs and maintains the cable between the building MPOE and the LEC’s Central Office where local circuits originate, which they also provide.
Telco Facilities	The physical layer consisting of copper and fiber cable and termination be it active or passive.
Telco Services	The circuits that are used to provide voice and/or data connection between active equipment and the public network.

### MPOE

An interior entrance only serves the MPOE, which is located near the south side entrance of the building. This is considered a secondary MPOE for the campus with the primary MPOE being located at 2 Results Way, which is identified as Building 3. A copper feeder from the street (LEC) provides connectivity into the MPOE. The protection field from AT&T is good shape, though the MPOE area requires some major attention.

The copper Telco Facilities is a 300-pair cable, which terminates on 66-style termination blocks attached to the plywood backboard. This termination point includes a protection fuse field. In the past, basic phone lines and DS1/T1s were delivered on this cable.

Currently, there are no fiber Telco Facilities installed in the MPOE. The LEC (AT&T) has confirmed that fiber Telco Facilities could be delivered to the MPOE, which would be based upon an order for high-bandwidth Telco Services.

An MPOE usually includes tie cable(s) to the building IDFs to distribute Telco Services. There are no tie cables in place currently. New tie cables would need to be included in a future design.

### IDF

This building has a few locations that appear to have been IDFs in the past. IDF build-outs, which would include tie cables and station cables, will need to be included in a future design.

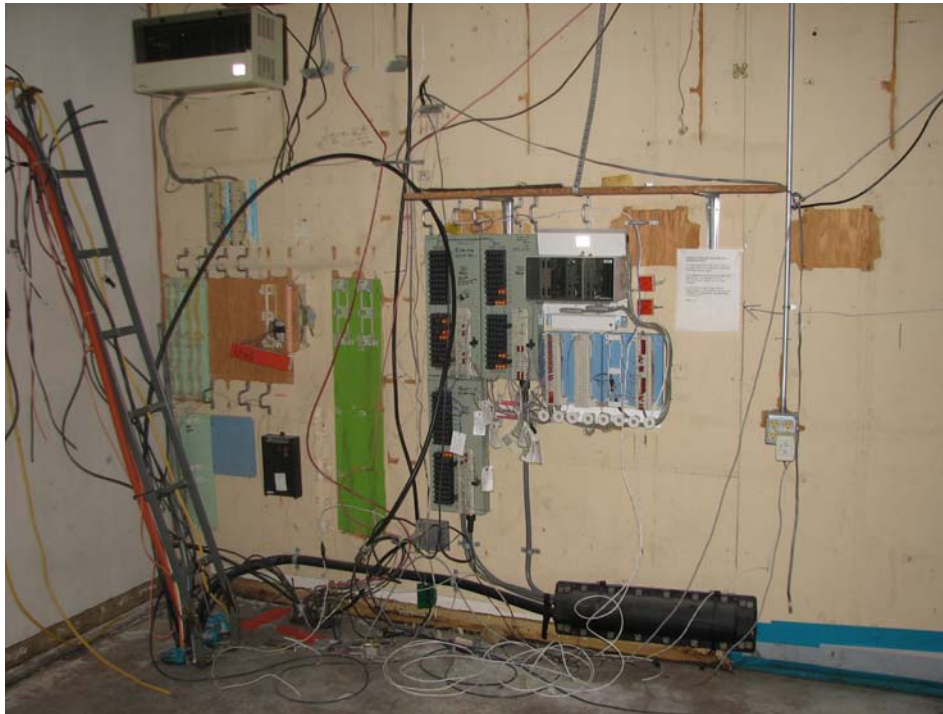
### Wireless Service

There was no building wireless service devices observed.

### Cable/Satellite

There was no satellite dishes observed on the roof. There was what appeared to be a microwave antenna located on the roof. There is a coax cable coming in to the MPOE from the street but it is unclear whether it is able to provide broadcast services.

**Photos of the site**



The MPOEs current condition.



One of the IDFs in the building. The cables have been cut-off above the termination blocks.